

# Anchor-Ventana Glass

[www.VentanaMan.com](http://www.VentanaMan.com)

512-388-9400

1609 Chisholm Trail in Round Rock

8313 HWY 71 W in Oak Hill

## EXCITING NEW PRODUCTS

In an effort to fulfill our goal of "Total Customer Satisfaction", Anchor-Ventana Glass is always seeking new and exciting glass products for our customers.

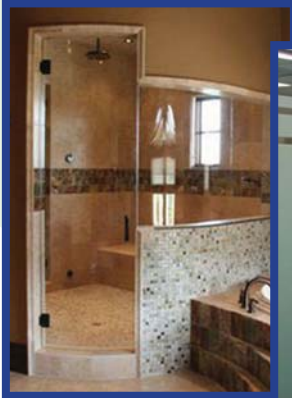
### So Many Things to See

*Colored Glass* has been added to our growing collection of beautiful glass choices. We will be stocking 9 different colors in 1/4" thickness and will be able to special order many more colors in a variety of thicknesses. We believe this will be the preferred material used for backsplashes in many kitchens and baths because there are no grout lines to maintain.

We are also carrying a new product called *3-Form*. This translucent architectural material is available in a variety of thicknesses, colors, patterns and finishes. It is a lightweight material making it an incredibly versatile product for everything from cabinet fronts, shower doors, & room dividers to vanity & counter tops.

Adding a new trick to our old dog, we have added *Horizon* hardware which has allowed us to expand the choices in hardware finishes for our frameless shower enclosures. Our technicians carry a sample board in their trucks allowing our customers to match their shower hardware to their plumbing fixtures in the bathroom.

We are also proud to be carrying the *Dorma* glass sliding doors. They can be flexibly adapted to a wide range of customer requirements. The beauty of the system is that floor guides are not required, allowing the use of one flooring material throughout and without breaks. In addition, virtually any shade and colour combination for the fitting surfaces is possible. Come by one of our showrooms and see for yourself how amazing these door are.



## ShowerGuard

No matter how hard you try to keep standard shower glass clear, eventually it proves to be a no win situation.

ShowerGuard glass is incredibly easy to clean and keep beautiful. You can scrub your fingers to the bone cleaning standard shower glass, yet it will never be as clean as the day it was installed. But ShowerGuard glass is a different kind of glass altogether. Its surface is protected during manufacturing through an ion beam process. This patented technology permanently seals the glass surface, helping to stop corrosion before it starts. ShowerGuard Glass will look as gorgeous as the day you bought it for years to come.

[www.ShowerGuardGlass.com](http://www.ShowerGuardGlass.com)

# WHAT'S NEW IN COMMERCIAL

VentanaMan Press

2

Winter 2008



## *Terrace Door*

While leaving the door open to be closer to nature is almost irresistible on a sunny day, the same door must also block the discomfort of storms, intense heat and the full range of Texas weather.

The *Series 2000T* terrace doors are designed to provide a pleasing interior or exterior for a residential or commercial application; the operating hardware comes in a choice of levers and finishes that blend into any decor. The design allows dual color options, which complement the decorating taste of individual owners.

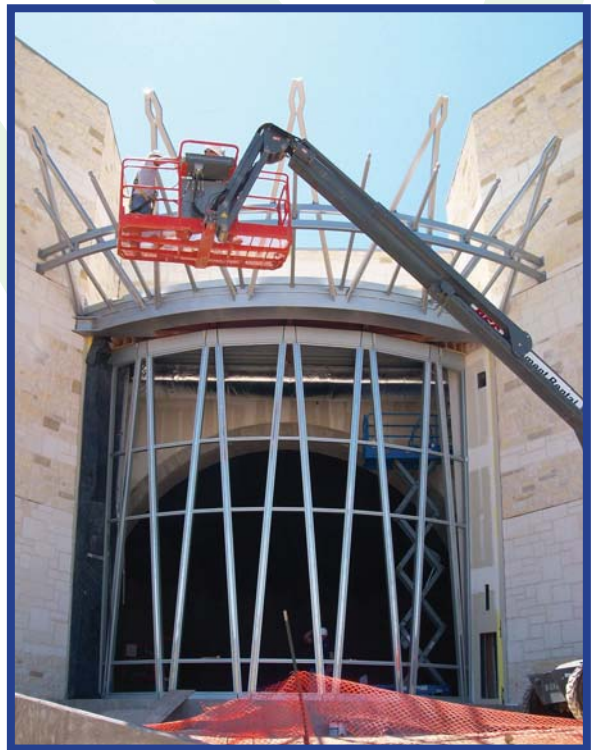
The distinctive lever handles are available in five different styles and eight finish options, selected to blend easily and create almost custom aesthetics for a variety of architectural styles.

Locking gears throughout the terrace door are tough wearing stainless steel and each includes a four-roller system, plus a latch lock and dead bolt. Other options include a heavy-duty, concealed stainless steel door-stop, and a parallel arm door closer.

To provide low thermal transmittance and high condensation resistance, terrace doors and frames include an ISOWEB thermal break, which consists of two parallel glass-reinforced, nylon strips. These thermal breaks are installed continuously along the length of the door and frame members to provide higher insulating qualities and occupant comfort in all types of weather.

## Beauty in the Making

Anchor-Ventana Glass is the commercial glazing contractor for many projects in Central Texas including Grace Covenant Church Worship Center on the Southwest corner of HWY 183 & 360. A great deal of hard work is in the display of the crown located at the back of the structure. Currently in progress are the crown and the three arches located in the front of the church which will be glazed with one inch gray insulated tempered glass. It is a great pleasure for us to be a part of this beautiful project.



## Proud of our Family



Anchor-Ventana Glass takes great pride not only in our products and services, but also in our employees. Each employee passes mandatory drug testing and background checks. Every knowledgeable and experienced staff member is trusted and well respected..

## A Reflection

Anchor-Ventana has been a leader in the glass industry for over 30 years. We have grown more than any other glass company in this area since our start in 1977. Thanks to a great staff and even greater customers we continue to grow and lead the market in technology and sales.

Ann Loosier, VP of Finance for Anchor-Ventana recently celebrated 30 years with the company. When Ann started, the company consisted of just about eight employees total. She often observes how far the company has come since its beginning. Ann, whose desk used to sit right in the middle of the shop, remembers the days when her desk would have to be moved completely out of the way in order to receive glass shipments. 31 years later, we have two large plants, each one devoted to one of two departments that make up the company, residential and commercial. Ann credits the longevity of the employees to why Anchor-Ventana has proven itself to be an outstanding leader. When asked about what makes her so proud of Anchor-Ventana Glass, Ann says, "We have people who have been here for years and years. Twenty five years, sixteen years...and that is just amazing to me and it says so much about a company".

Richard Danek, VP of Commercial Operations just celebrated his 30 year anniversary with Anchor-Ventana as well. Richard started like everyone else, in the plant working on a cutting table. But when

# A LITTLE HISTORY

the company began its commercial department in 1980, they needed someone to help in that department and Richard proved himself to be the man for the job. Here, 30 years later he is still proving himself. Richard now heads the entire commercial department with 35 employees and a large network of commercial vendors and customers.

Today Anchor-Ventana is booming with a total of 90 employees who have been hand selected to serve our community of customers. Now, with two locations, each with beautiful showrooms full of custom designs, we have proven ourselves as the principal in our industry. We continue to keep our commitment to customer satisfaction as our highest priority and number one goal.



**Come by one of our beautiful showrooms and get some great ideas!**



# BEAUTIFUL & SAFE

VentanaMan Press

4

Winter 2008

## Glass Handrails

One of the glass railing systems used by Anchor-Ventana Glass is the CRL B5S Series Standard Square Aluminum Base Shoe. It is used as the base channel for glass railing systems. It can be clad in five choices of architectural finishes. These finishes are Brushed Stainless, Polished Stainless, Polished Brass, Dark Bronze Anodized, Satin Anodized, and Satin Brass. The most critical component in a railing system is the proper attachment of the Aluminum Base Shoe to the substrate. CRL has engineered and tested a variety of attachment methods, and has developed an acceptable combination of drilling patterns and fasteners.

Another glass railing system used is the Post Railing Kit. This kit is designed for both commercial and residential applications, is supplied with glass fittings and meets or exceeds safety code standards. With this system we use 1/2" tempered polished glass available in clear, tinted or saten. This system is available in brushed stainless or polished stainless finishes with custom powder paint finishes also available.

Anchor-Ventana Glass can also add glass to a custom made decorative iron railing. We will work with your metal artist to create a decorative and safe handrail custom made to fit your needs.



Quality work since 1977

**ANCHOR  
VENTANA**

GLASS • SHOWER DOORS • MIRRORS

P.O. BOX 191  
ROUND ROCK, TX 78680

Company Name  
123 Everywhere Avenue  
City, ST 00000